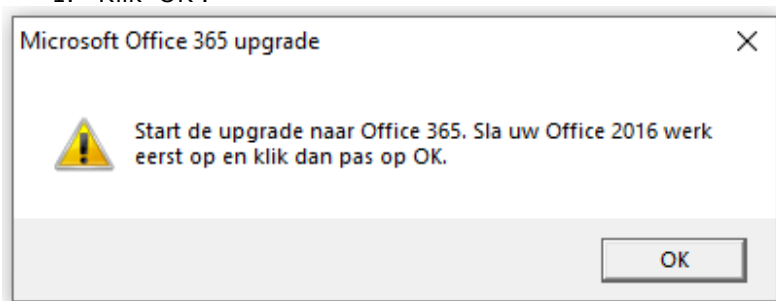




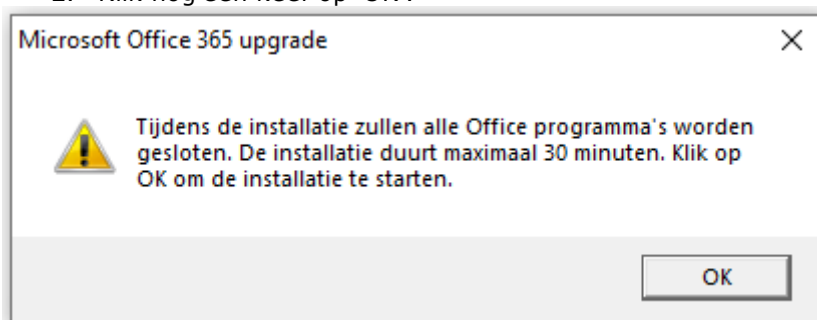
Handleiding - Office 365 installatie

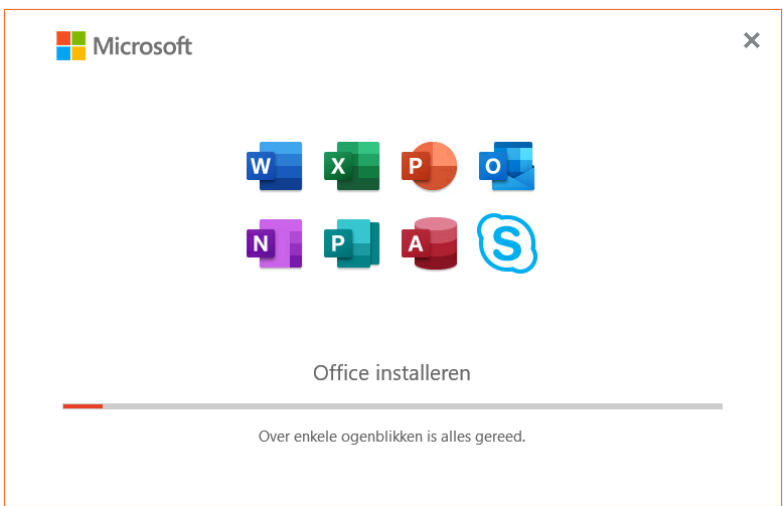
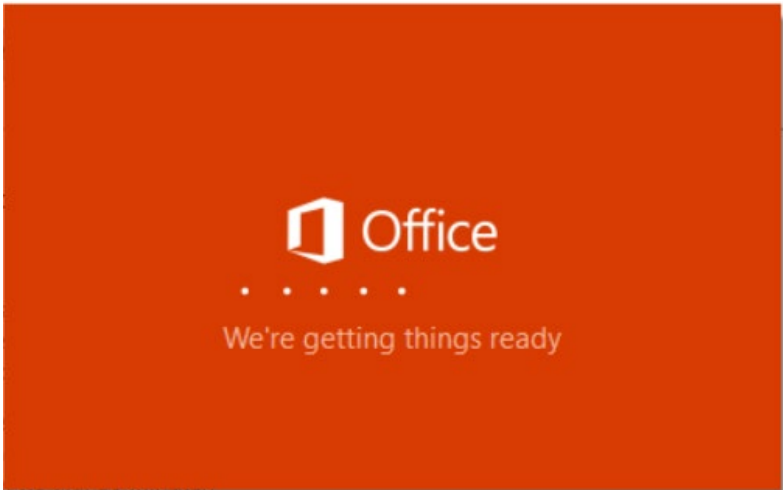
In deze handleiding lees je hoe je Office 365 installeert.

1. Klik 'OK'.

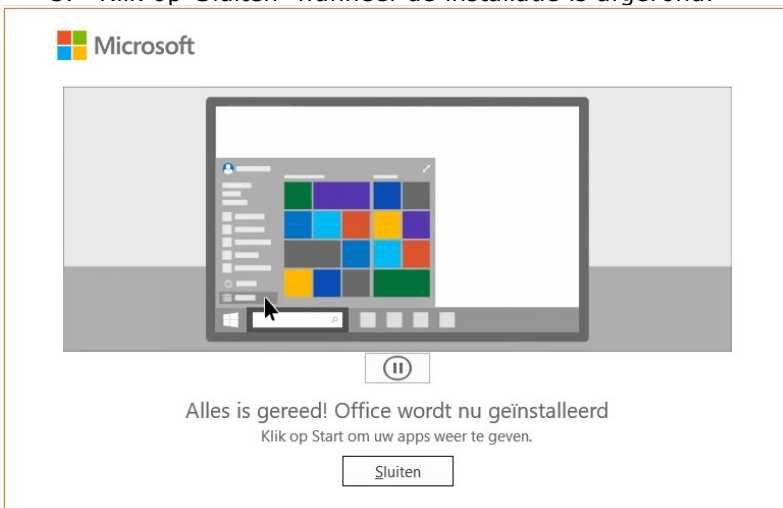


2. Klik nog een keer op 'OK'.

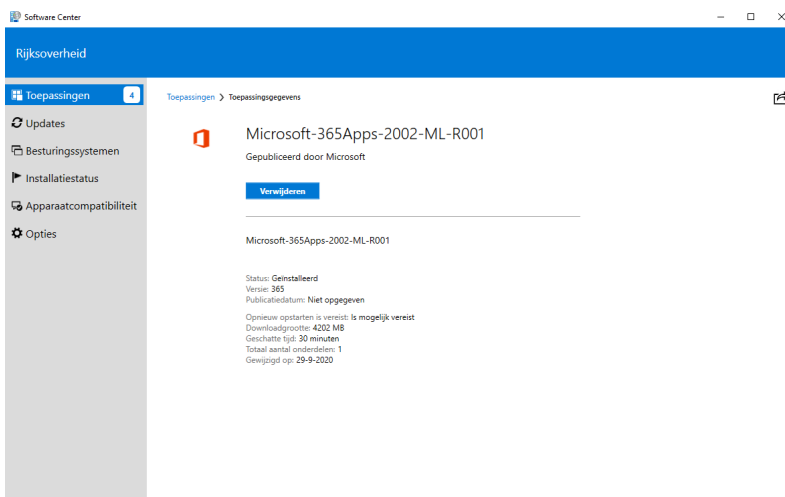
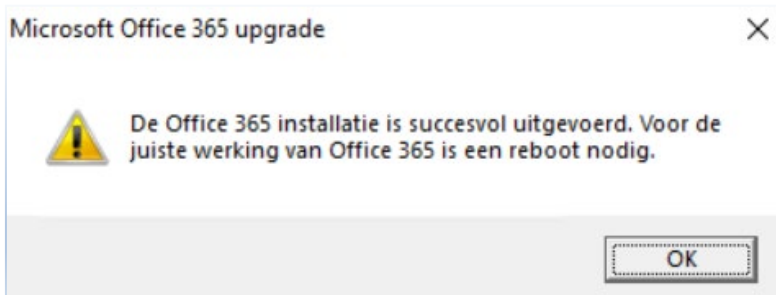




3. Klik op 'Sluiten' wanneer de installatie is afgerond.

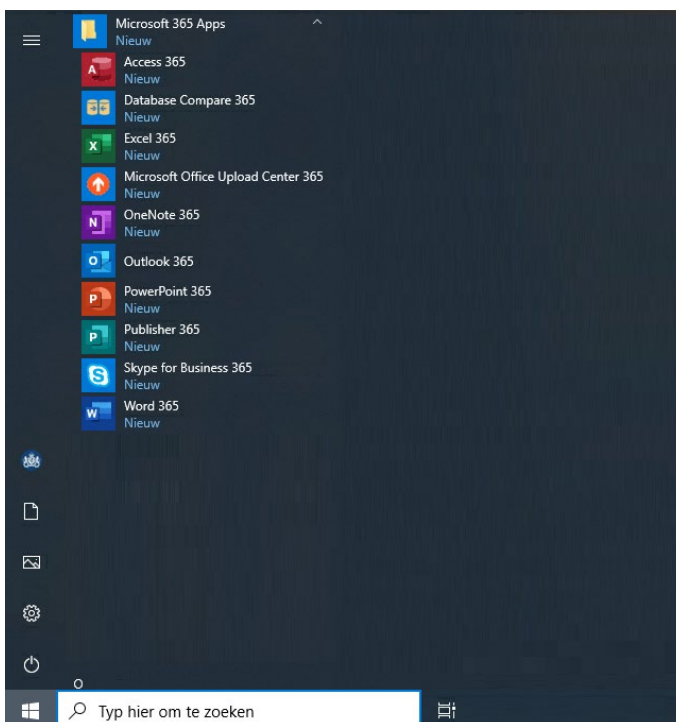


4. Klik 'OK'



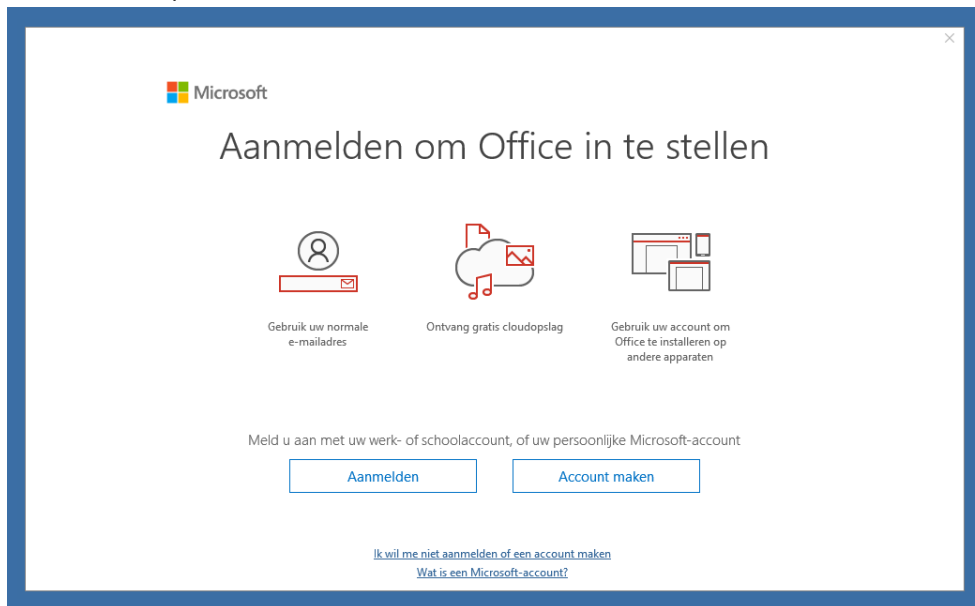
5. Herstart de pc of laptop.

Na het inloggen zijn de applicaties beschikbaar in het startmenu.

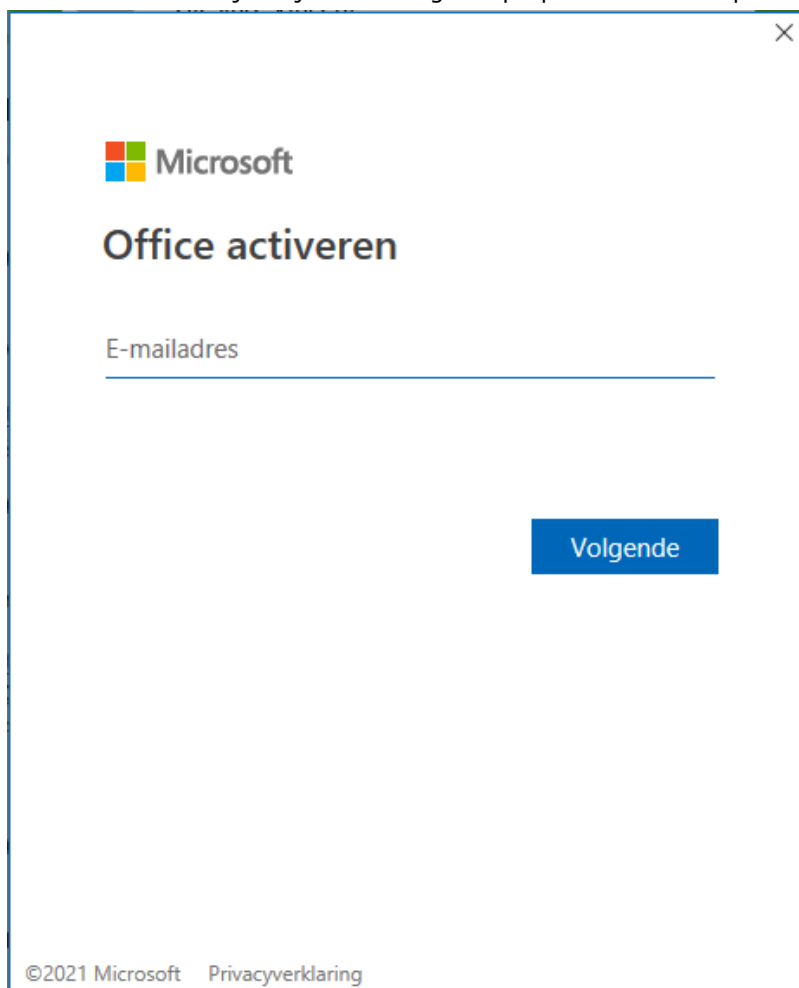


Bij het openen van office product (Word, Excel, Outlook) opent er het volgende scherm.

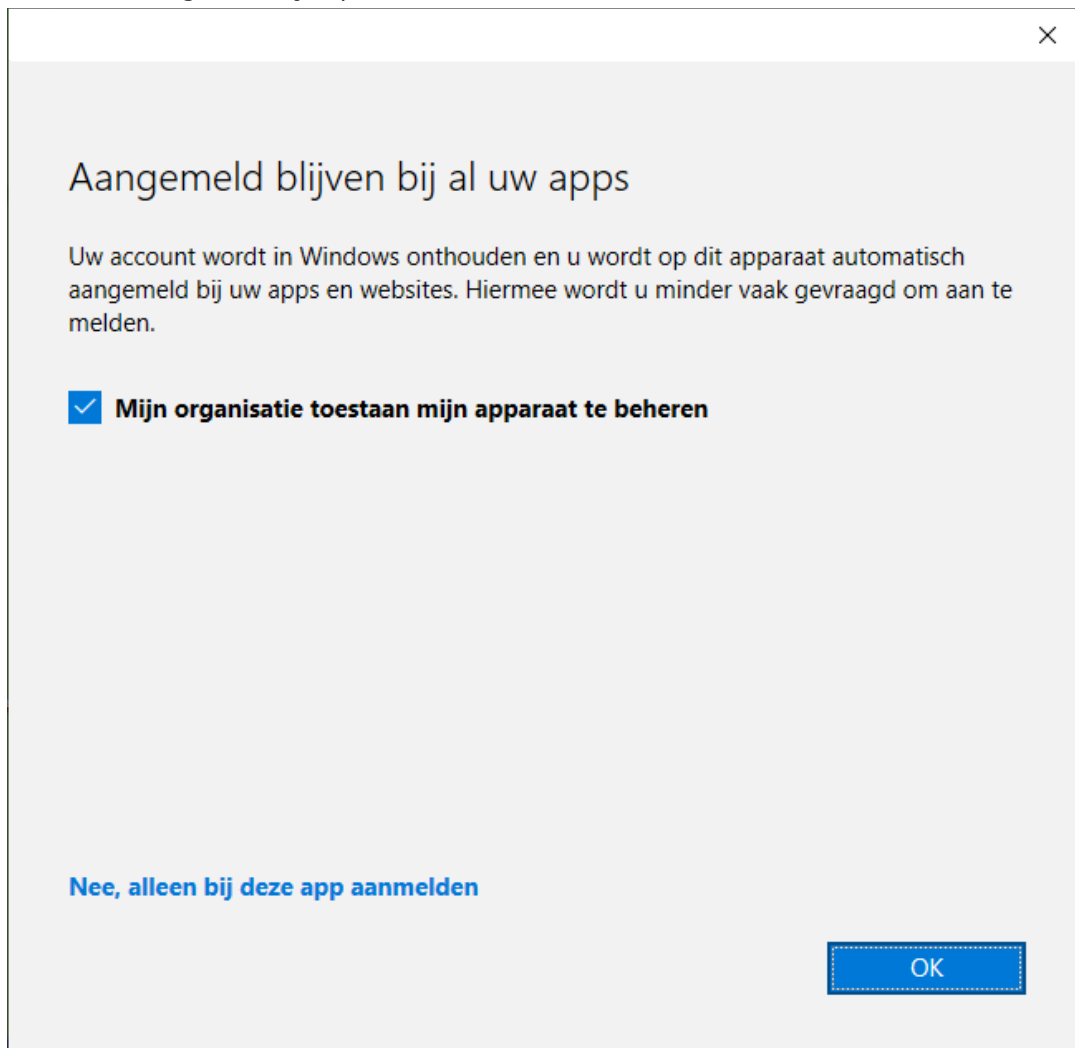
6. Klik op 'Aanmelden'.



7. Vul hier je emailadres in. Dit is de inlognaam die je ook hanteert bij toegang tot Flex2Rijk of jouw managed laptop. Klik daarna op 'Volgende'.



8. Vervolgens klik je op 'OK'.



Colofon

SSC-ICT
Koningskade 4
Postbus 20906
2500 EX Den Haag